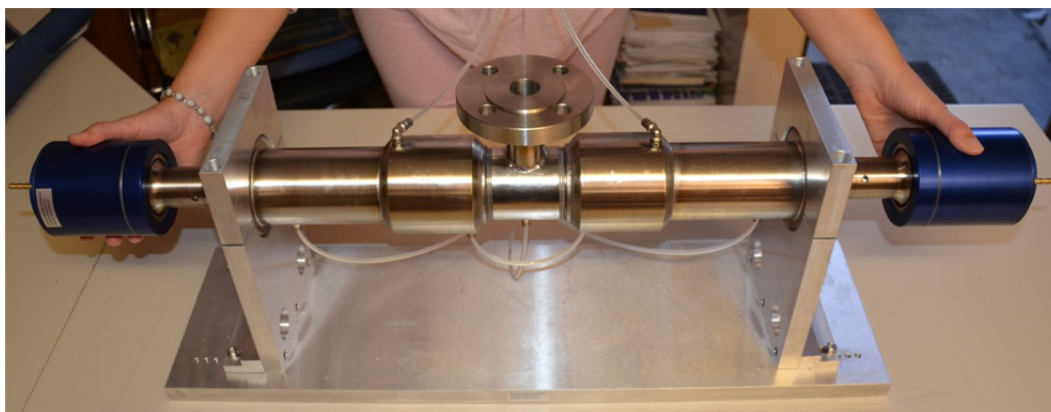
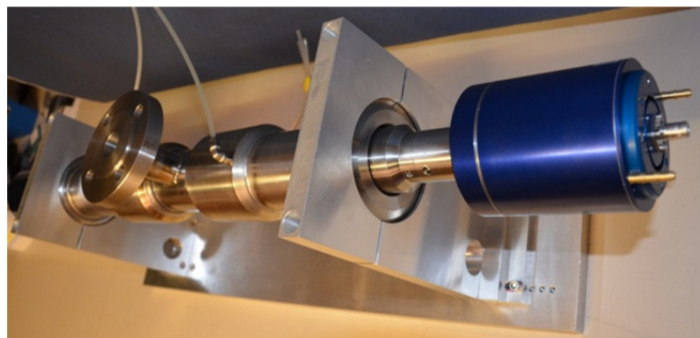
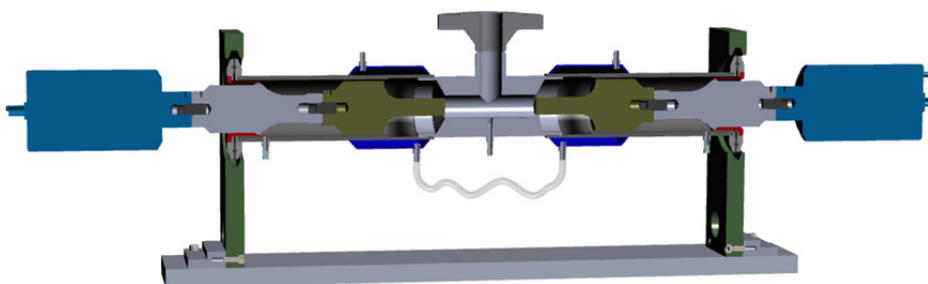
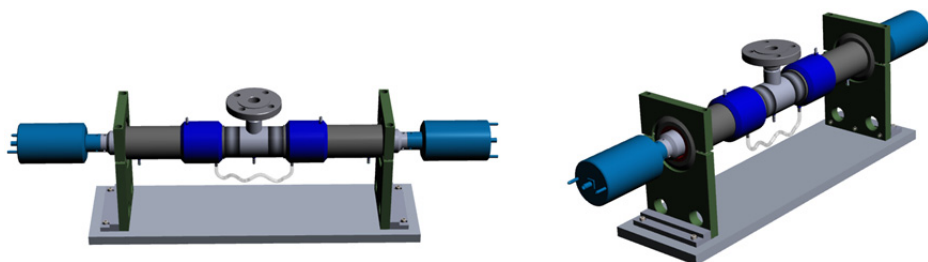
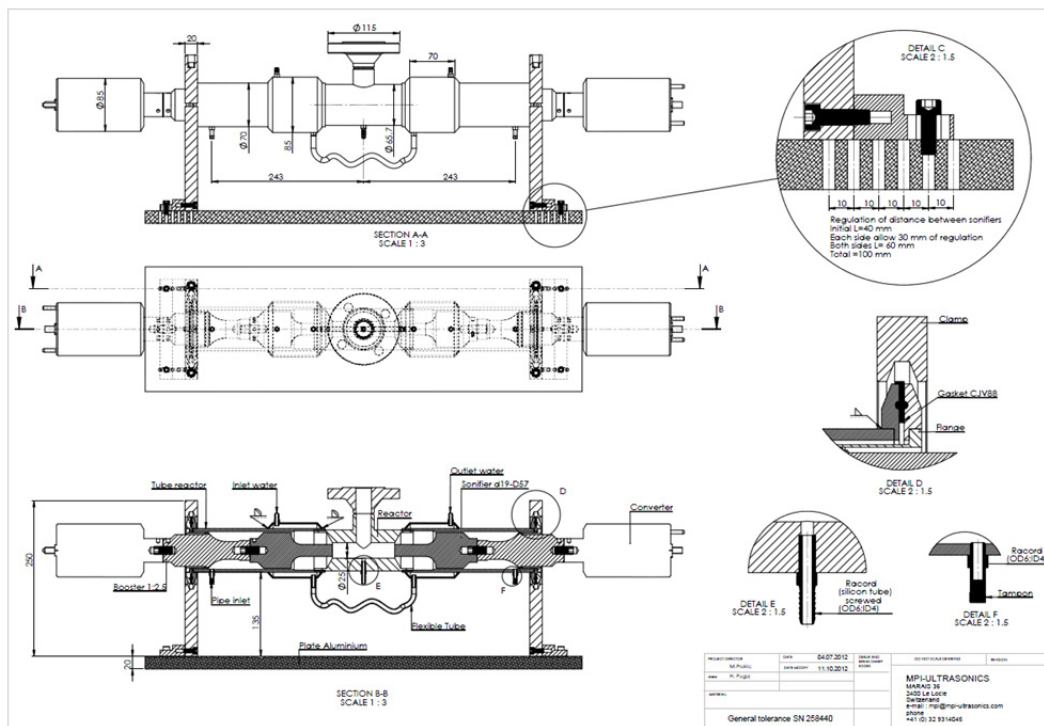




[www.UltrasonicsWorldGroup.com](http://www.UltrasonicsWorldGroup.com)

**NANO-PARTICLES - NANO-DIAMONDS REACTOR**





- This sonoreactor is creating very high intensity of cavitation (two mutually opposed ultrasonic jets)
- Oversized: 2 x 3 kW ultrasonic converters, 2 x 3 kW Ultrasonic generators, 20 kHz
- Water-cooled ultrasonic converters for long, continuous operations
- Water jackets for reactor chamber
- Adjustable reactor chamber
- Inlets and outlets for liquid circulation

# Ultrasonics World Group



## Ultrasonic World LLC

[www.UltrasonicsWorldGroup.com](http://www.UltrasonicsWorldGroup.com)

[www.mastersonics.com](http://www.mastersonics.com)

[www.mpi-ultrasonics.com](http://www.mpi-ultrasonics.com)

[UWG@UltrasonicsWorldGroup.com](mailto:UWG@UltrasonicsWorldGroup.com)

[mpi@mpi-ultrasonics.com](mailto:mpi@mpi-ultrasonics.com)

Phone: +41- (0)-32-9314045

Marais 36  
2400, Le Locle  
Switzerland  
[mpi@bluewin.ch](mailto:mpi@bluewin.ch)

## Known restrictions related to single-probe systems

1. Operating liquid temperature. Necessary to have forced cooling
2. Complexity regarding mounting, fixation, sealing
3. Sonotrode front-emitting surface-erosion caused by Intensive Cavitation and Sonication



**Erosion of sonotrode after 3 months of operation: 1000 watts, 20 kHz**



**We can also supply similar sonotrodes with replaceable tips.**