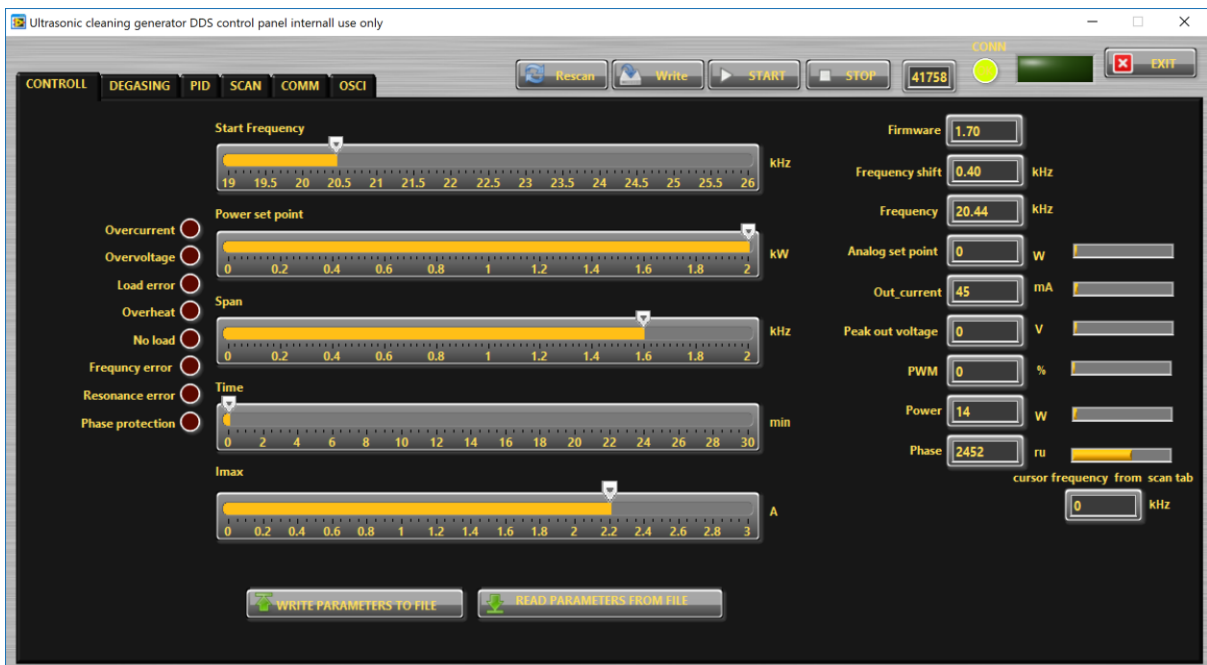
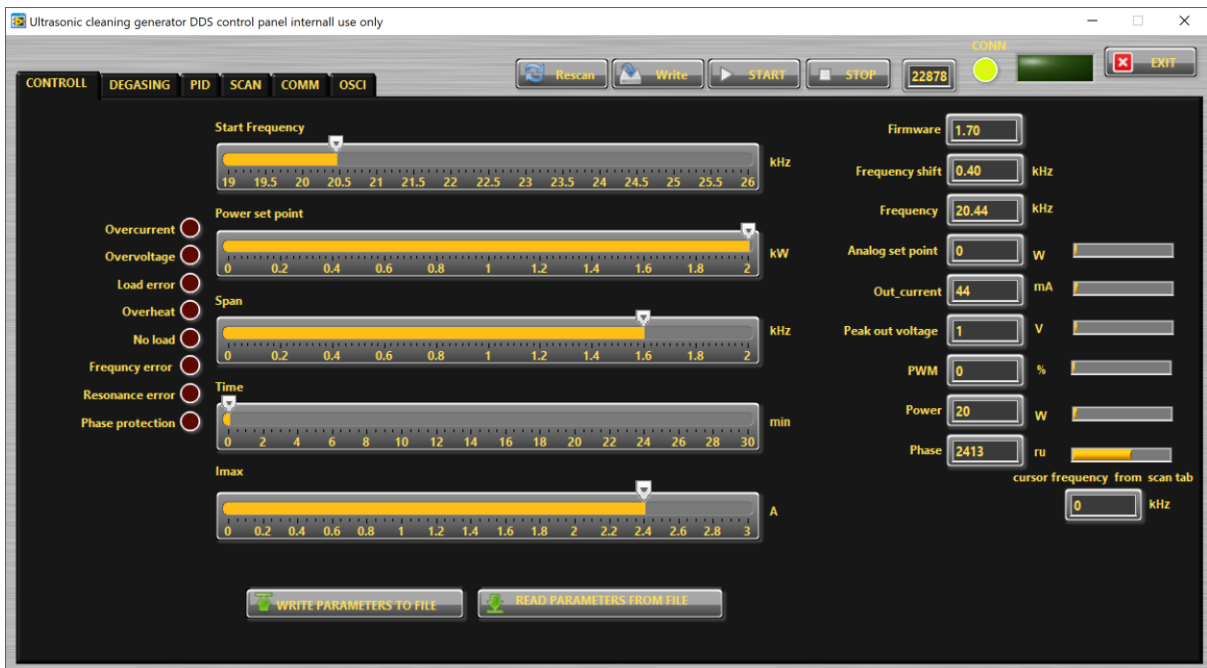
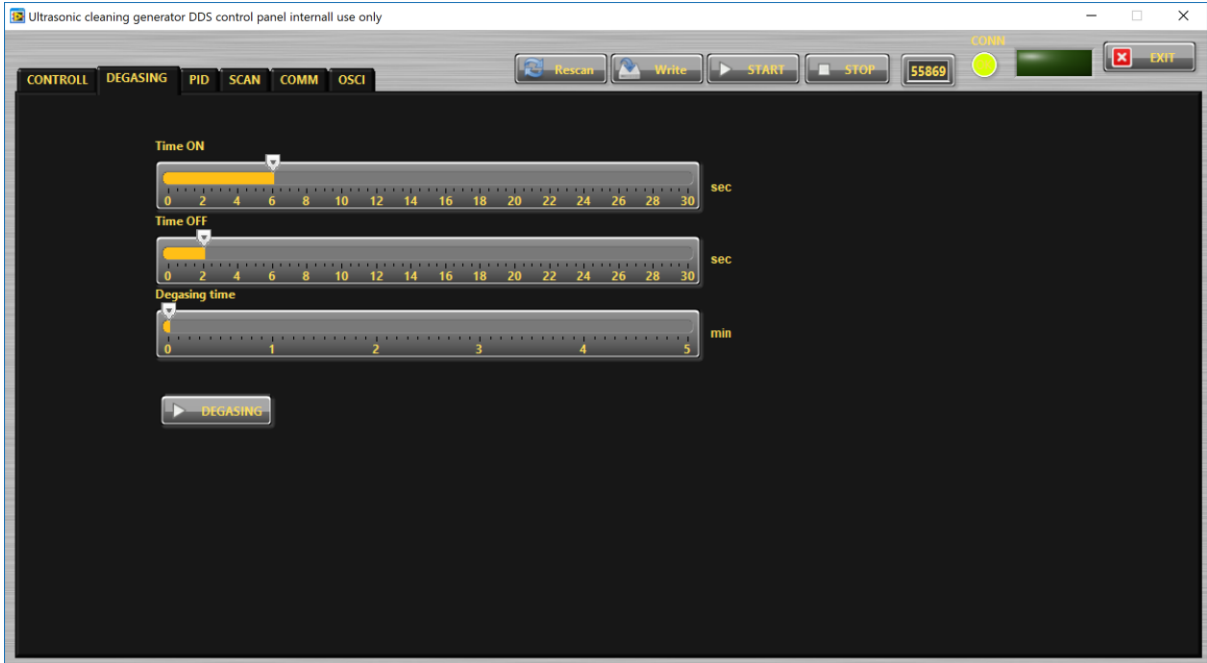
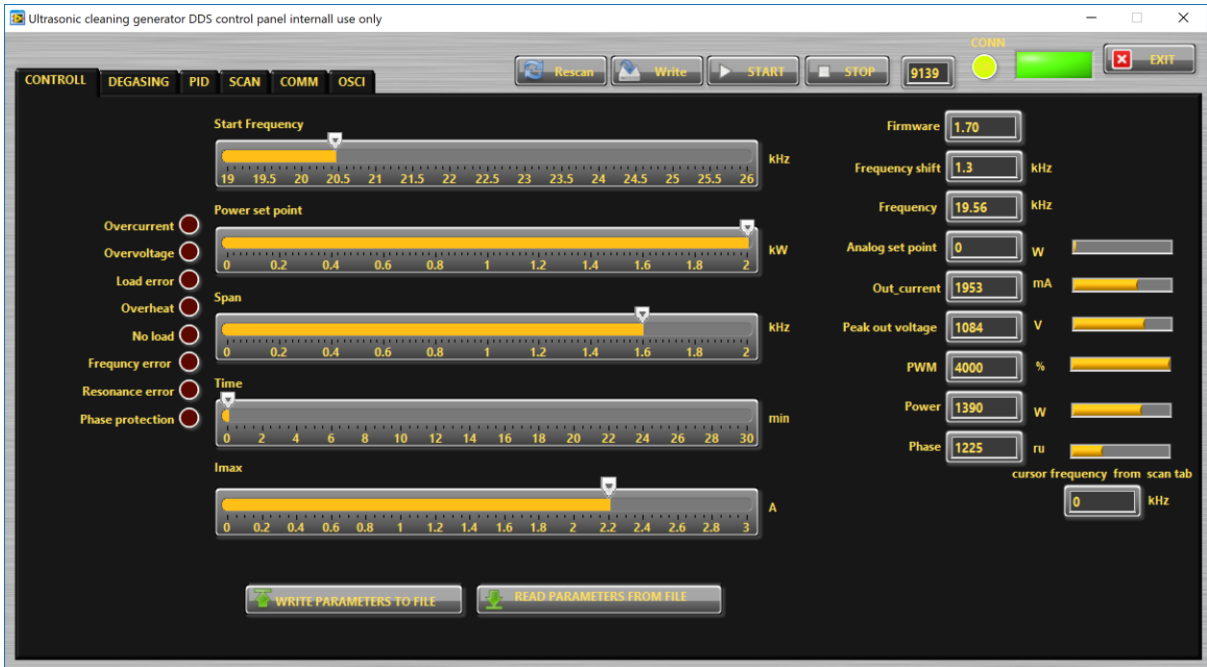


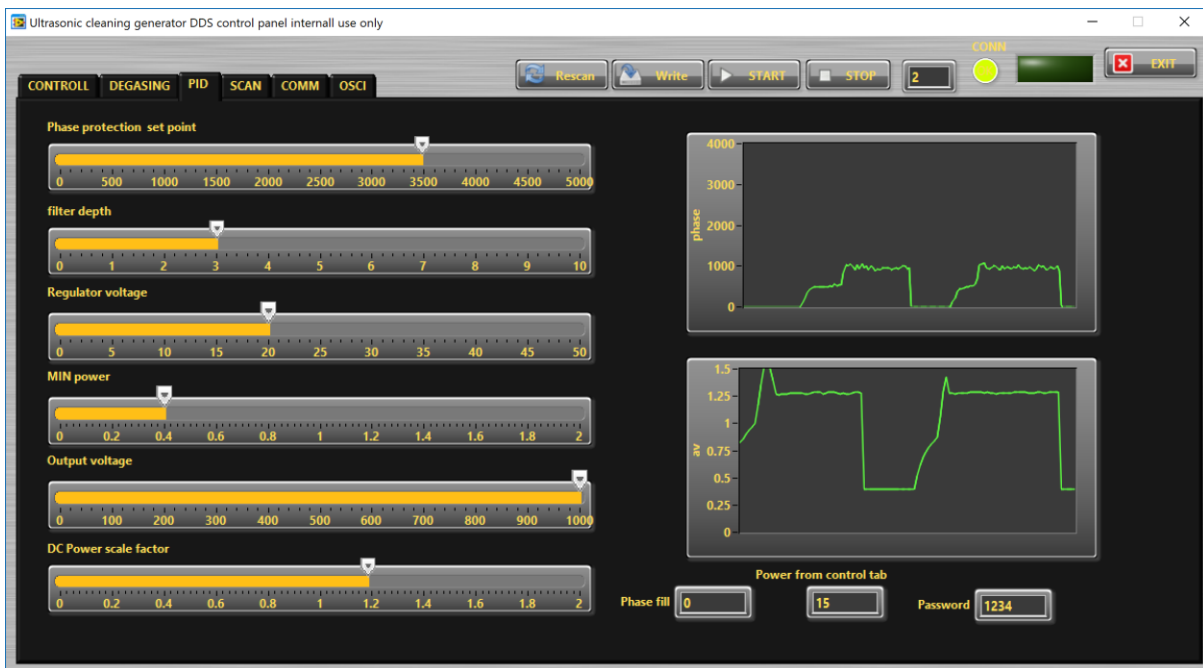
PROJECT DIRECTOR M.Prokic	DATE 21.03.2018	DEBUR AND BREAK SHARP EDGES	DO NOT SCALE DRAWING	REVISION		
drew M.Puga	DATE MODIFY		MPI-ULTRASONICS MARAIS 36 2400 Le Locle Switzerland e-mail : mpi@mpi-ultrasonics.com phone +41 (0) 32 9314045			
MATERIAL:			Well Operation Configurations 20kHz - 1500W			
General tolerance SN 258440						
dimension nominale (mm)	>3 ...6	>6 ...30	>30 ...120	>120 ...400	>400 ...1000	>1000 ...2000
Ecart (mm)	± 0.05	± 0.1	± 0.15	± 0.2	± 0.3	± 0.5
			SCALE: 1:1	SHEET 1 OF 1	A3	

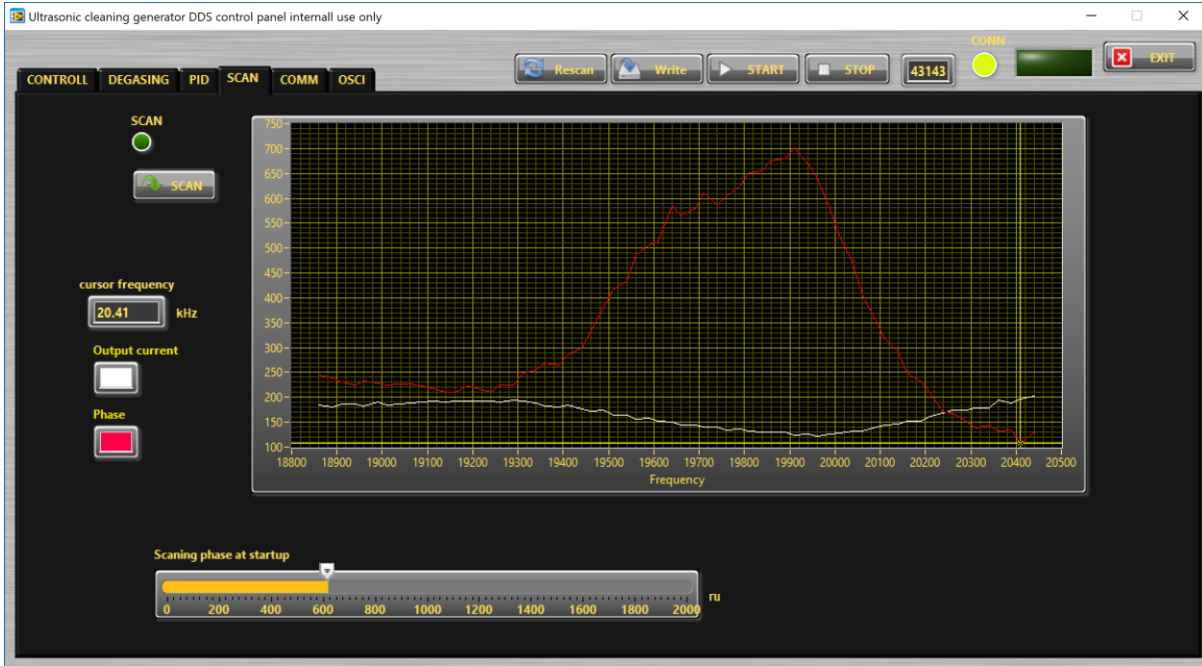
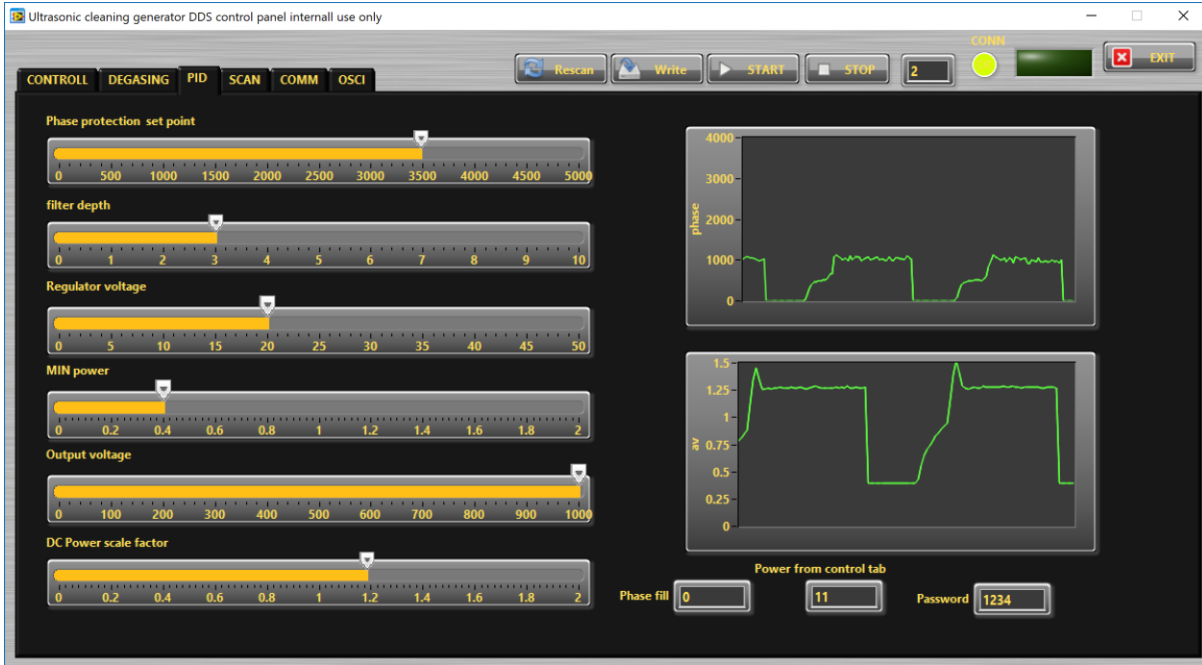
4HWL-loaded. Strong air flow cooling is not necessary

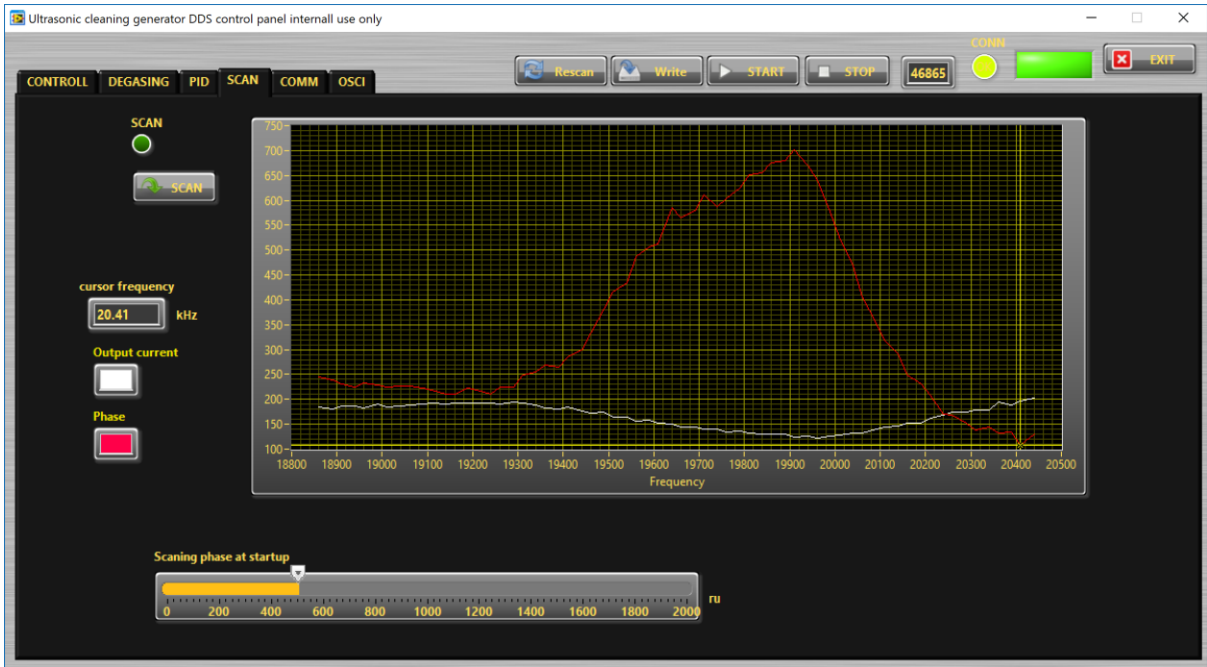


In case of problems, reduce Imax









The screenshot displays the 'COMM' control panel. The 'COMM' tab is selected. At the top right, there are buttons for 'Rescan', 'Write', 'START', and 'STOP', along with a frequency display showing '104' and a green 'CONN' indicator. The panel is divided into three main sections: 'Modbus network status' with a 'Timeout Error' field and 'RES' and 'COM6' buttons; 'Network settings' with 'Baud rate' (115200) and 'MODBUS address' (6) fields; and 'Generator settings' with 'NEW MODBUS ADDRESS' (6) and 'NEW Baud rate' (115200) fields, each with an 'ASSIGN NEW MOBBUS ADDRESS' and 'ASSIGN NEW MOBBUS SPEED' button. At the bottom, there is a 'SCANNING FOR GENERATORS' button and a row of 20 status indicators, the first of which is highlighted in green.

