

Outlet:
Water jacket fitting
Composed by:
AH20G + BO20G
(3/4") (316L)

SS314
60x60x2 mm
(KOHLER)

M8x1.0
(2x)

M8x1.0
(2x)

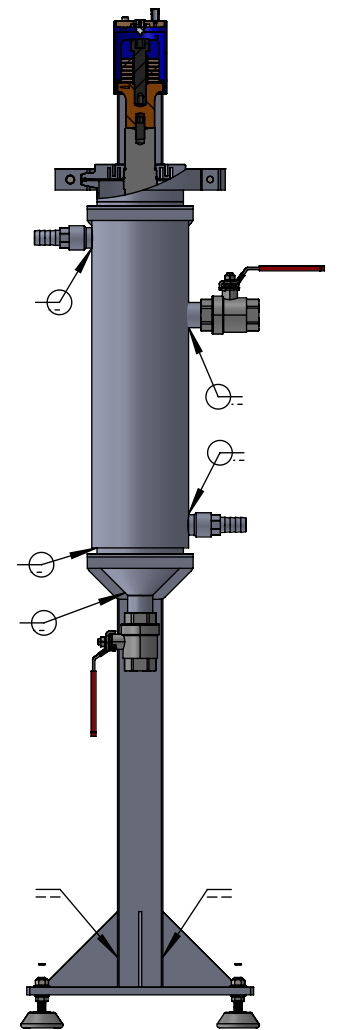
Fast Clamp
AI7075

MPI Clamps
316L

Processing liquid inlet
Fginox_4RBIFC25
(1") (316)

Inlet:
Water jacket fitting
Composed by:
AH20G + BO20G
(3/4") (316L)

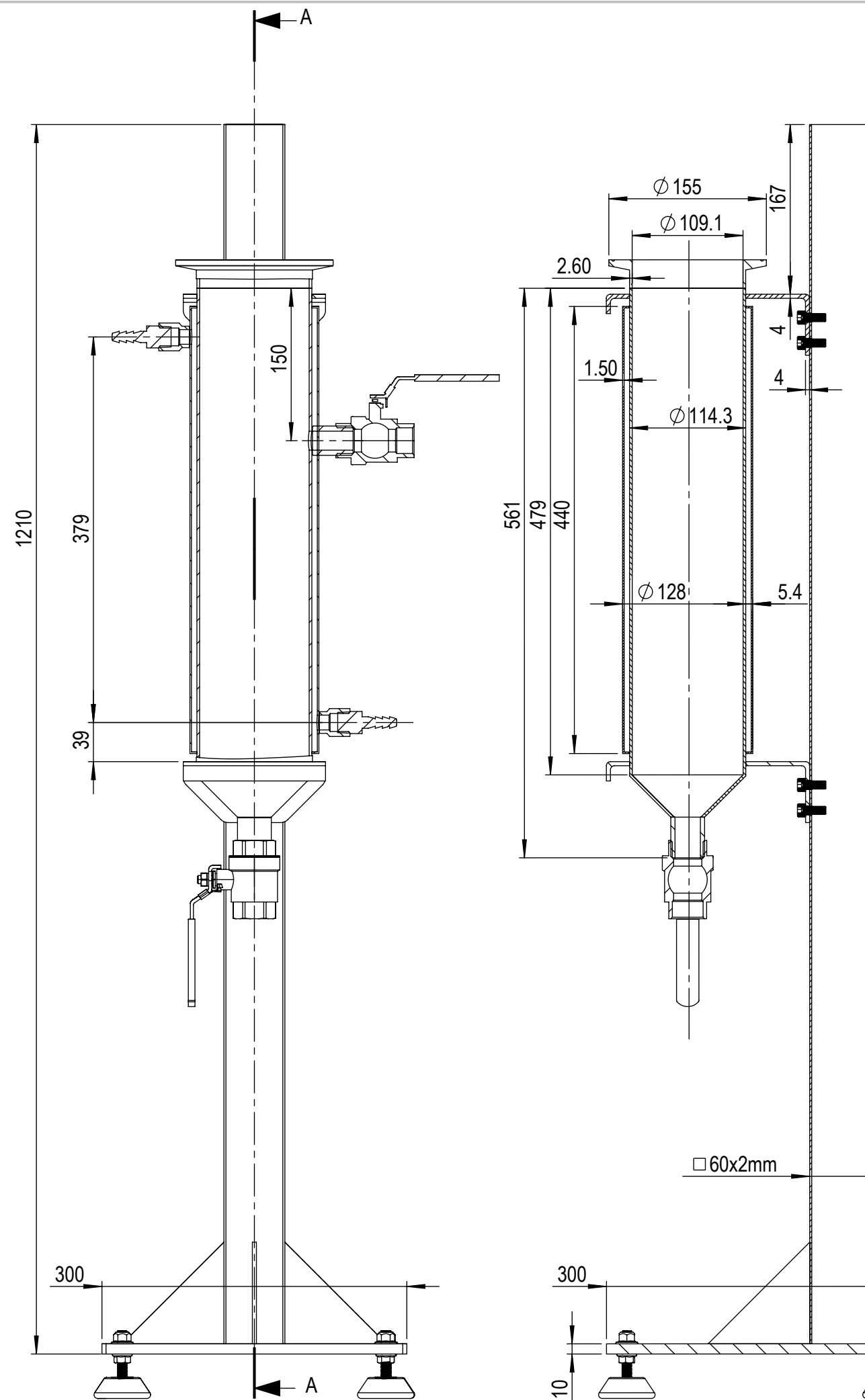
Processing liquid output
Fginox_4RBIFC25
(1") (316)



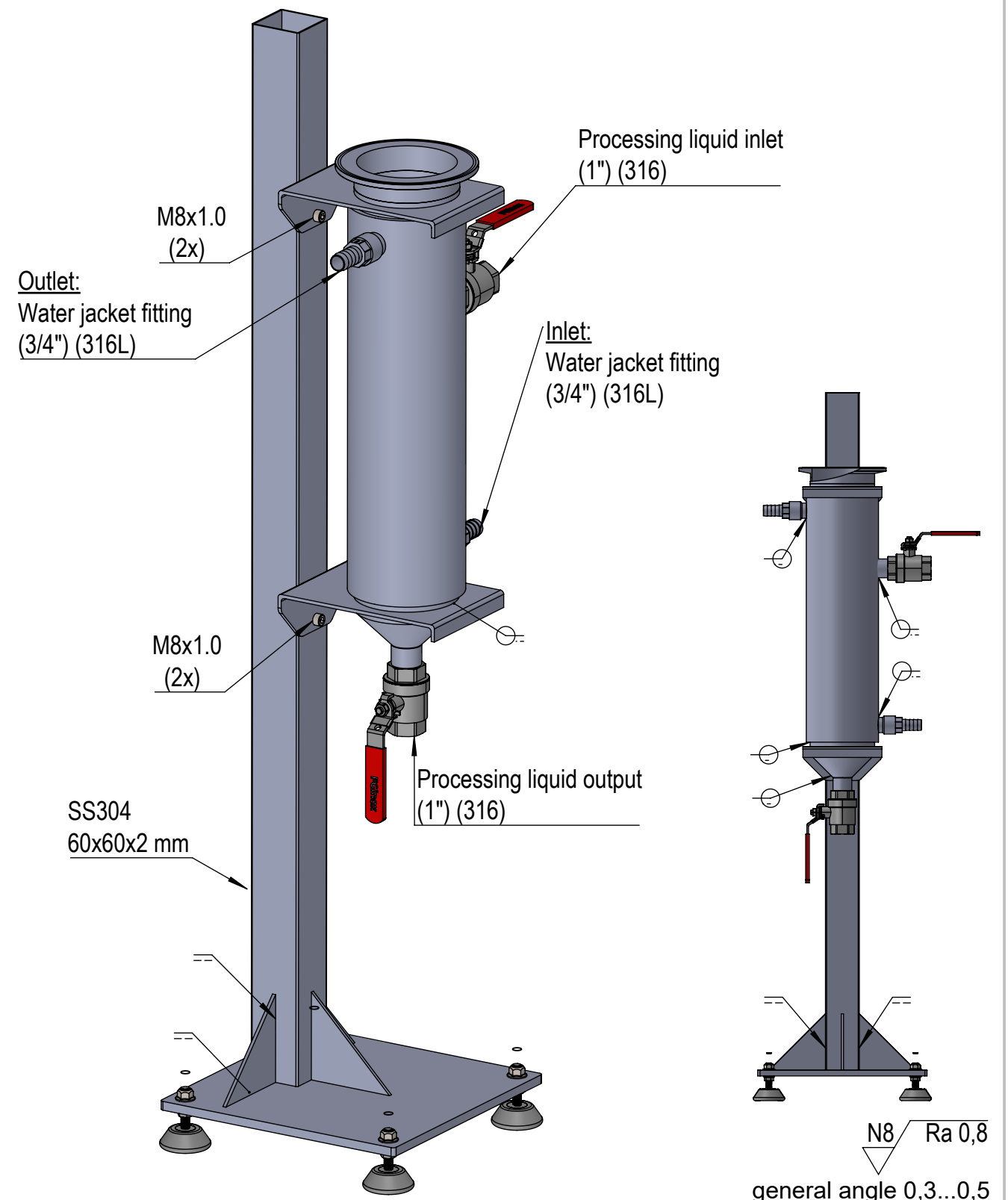
N8 Ra 0,8

general angle 0,3...0,5

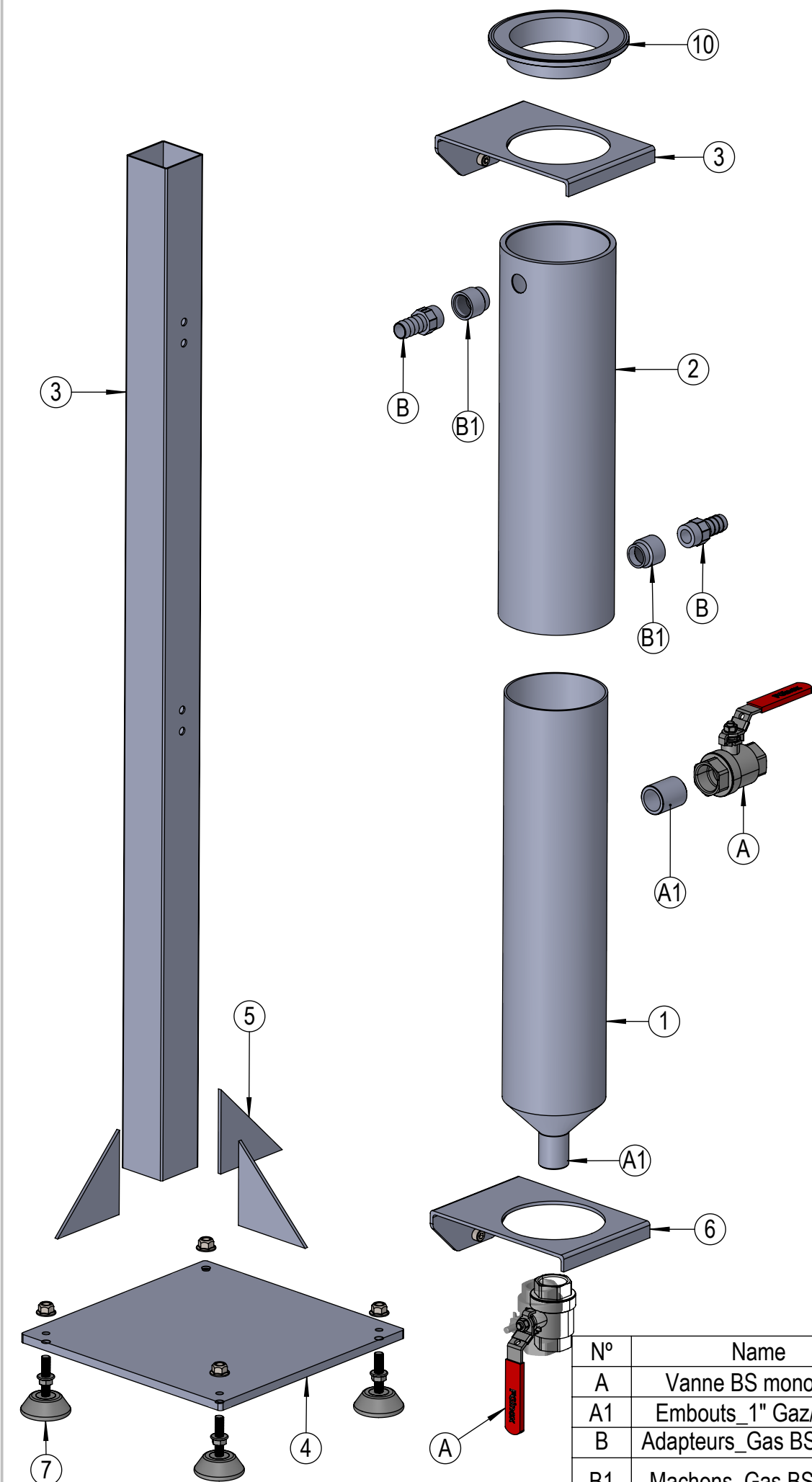
PROJECT DIRECTOR		DATE		17.08.20182		DEBUR AND BREAK SHARP EDGES		DO NOT SCALE DRAWING		REVISION	
M.Prokic		DATE MODIFY						MPI-ULTRASONICS MARAIS 36 2400 Le Locle Switzerland e-mail : mpi@mpi-ultrasonics.com phone +41 (0) 32 9314045			
drew	H. Puga										
MATERIAL:								Liposomes-Reactor			
General tolerance SN 258440											
dimension nominale (mm)		>3 ...6	>6 ...30	>30 ...120	>120 ...400	>400 ...1000	>1000 ...2000				
Ecarts (mm)		± 0.05	± 0.1	± 0.15	± 0.2	± 0.3	± 0.5	SCALE: 1:1		SHEET 1 OF 1	
										A3	



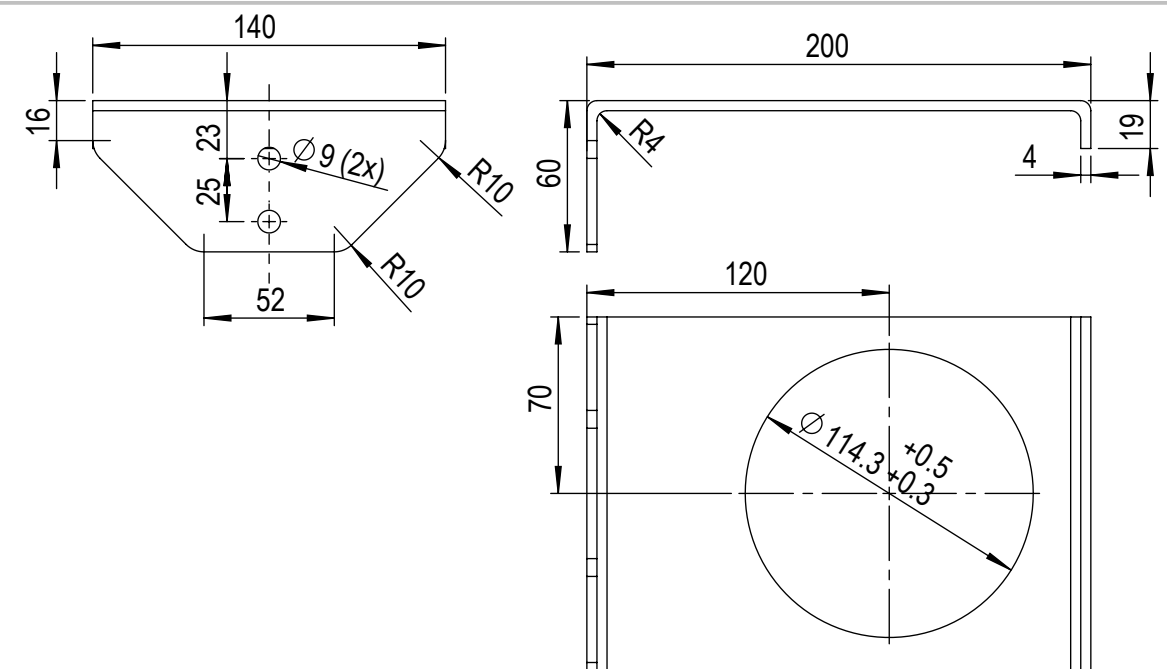
SECTION A-A
SCALE 1 : 5



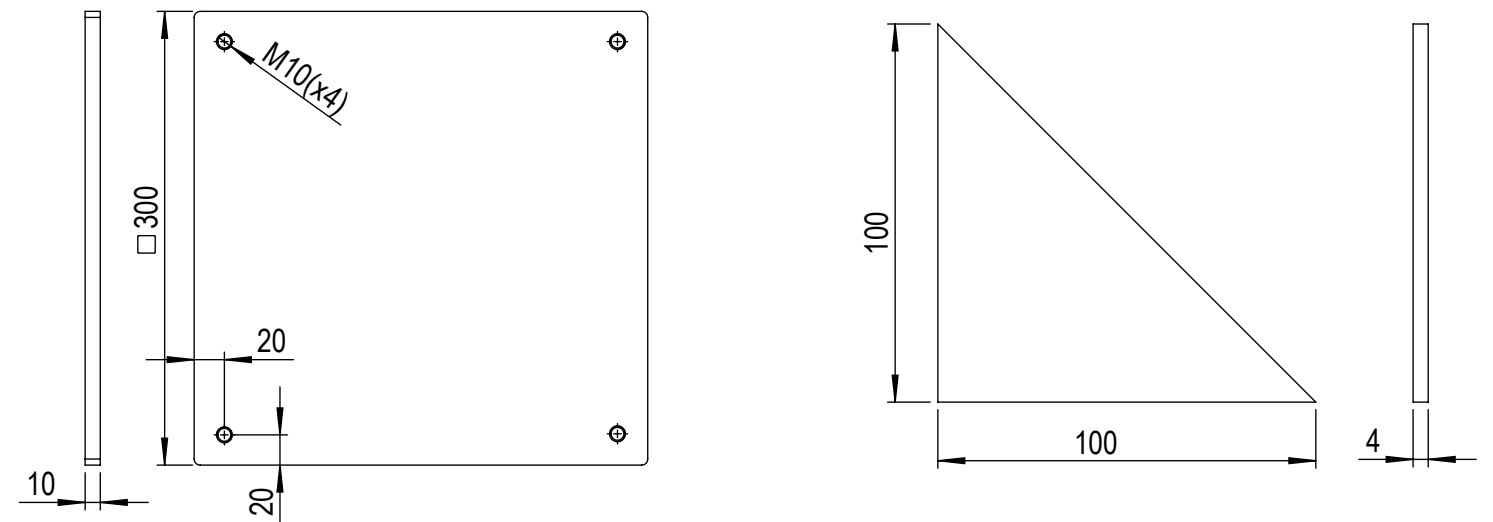
PROJECT DIRECTOR		DATE		17.08.20182		DEBUR AND BREAK SHARP EDGES		DO NOT SCALE DRAWING		REVISION	
drew	H. Puga		DATE MODIFY						MPI-ULTRASONICS MARAIS 36 2400 Le Locle Switzerland e-mail : mpi@mpi-ultrasonics.com phone +41 (0) 32 9314045		
MATERIAL:											
General tolerance SN 258440									Liposomes-Reactor		
dimension nominale (mm)		>3 ...6	>6 ...30	>30 ...120	>120 ...400	>400 ...1000	>1000 ...2000				
Ecarts (mm)		± 0.05	± 0.1	± 0.15	± 0.2	± 0.3	± 0.5				
							SCALE: 1:1		SHEET 1 OF 1		A3



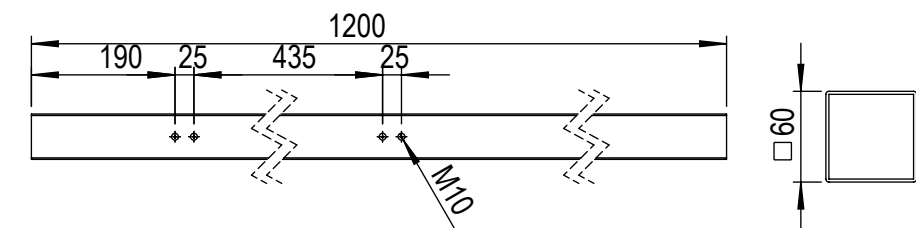
Part N° 3



Part N° 4



Part N° 11

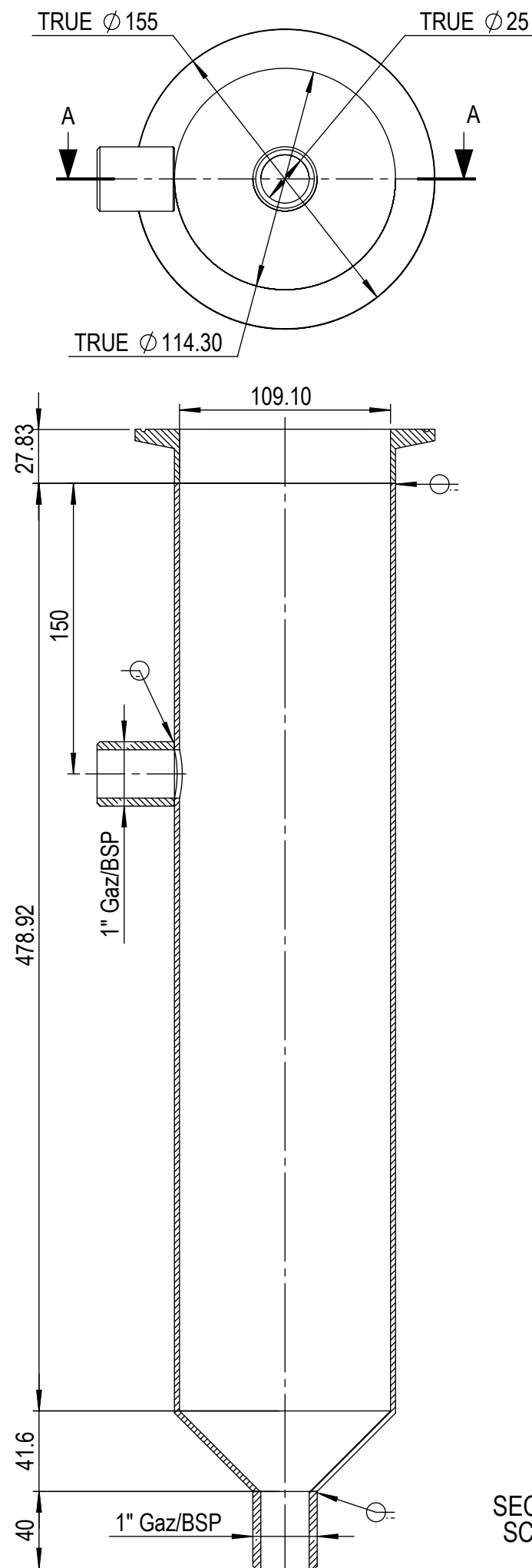


N8 Ra 0,8

general angle 0,3...0,5

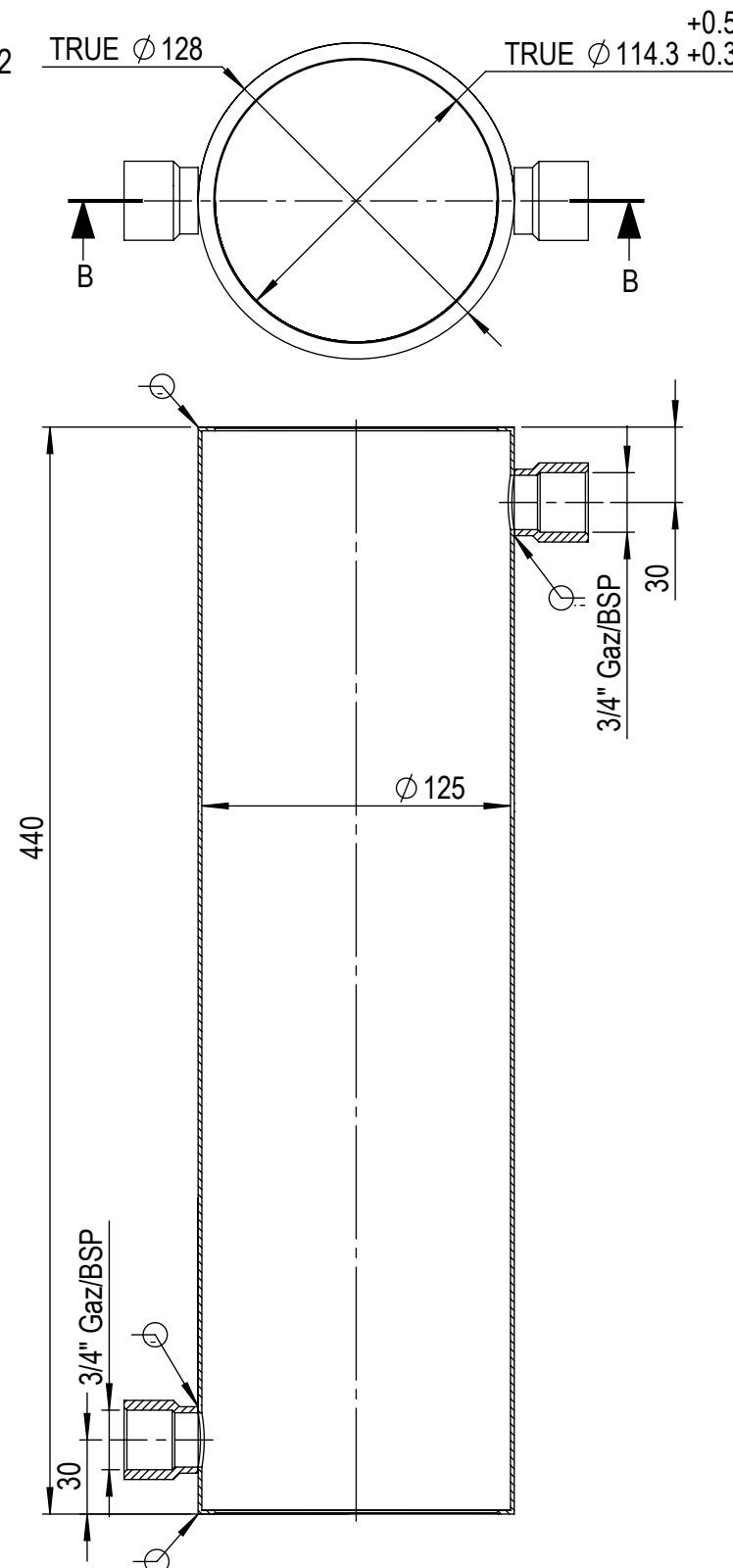
PROJECT DIRECTOR		DATE		17.08.20182		DEBUR AND BREAK SHARP EDGES		DO NOT SCALE DRAWING		REVISION	
M.Prokic		DATE MODIFY						<div>MPI-ULTRASONICS</div> <div>MARAIS 36</div> <div>2400 Le Locle</div> <div>Switzerland</div> <div>e-mail : mpi@mpi-ultrasonics.com</div> <div>phone</div> <div>+41 (0) 32 9314045</div>			
drew	H. Puga										
MATERIAL:											
General tolerance SN 258440											
dimension nominale (mm)		>3 ...6	>6 ...30	>30 ...120	>120 ...400	>400 ...1000	>1000 ...2000	Liposomes-Reactor			
Ecarts (mm)		± 0.05	± 0.1	± 0.15	± 0.2	± 0.3	± 0.5	SCALE: 1:1		SHEET 1 OF 1	
										A3	

Part N° 1



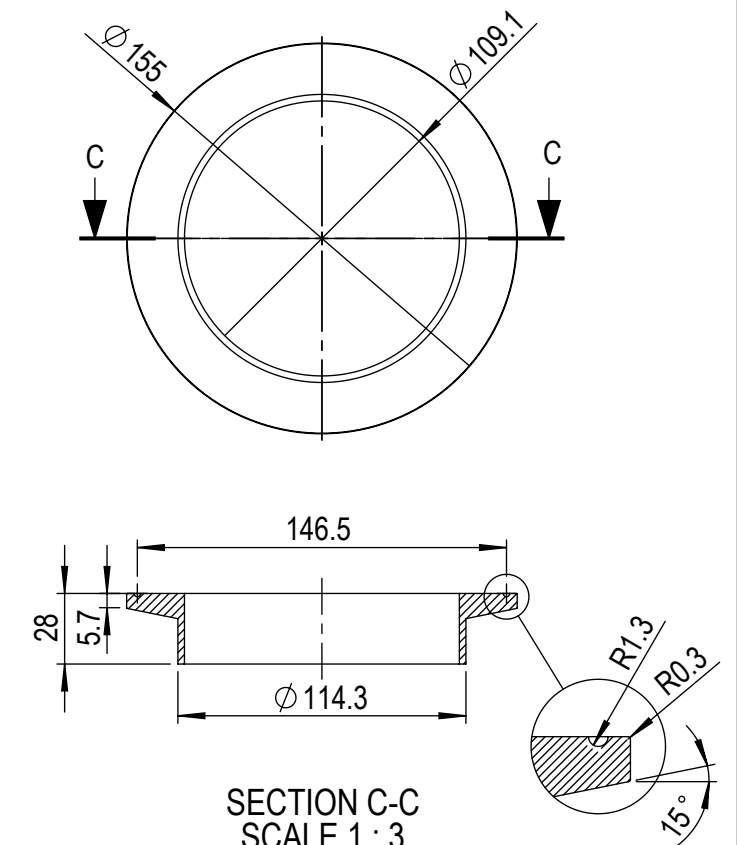
SECTION A-A
SCALE 1 : 3

Part N° 2



SECTION B-B
SCALE 1 : 3

Part N° 10

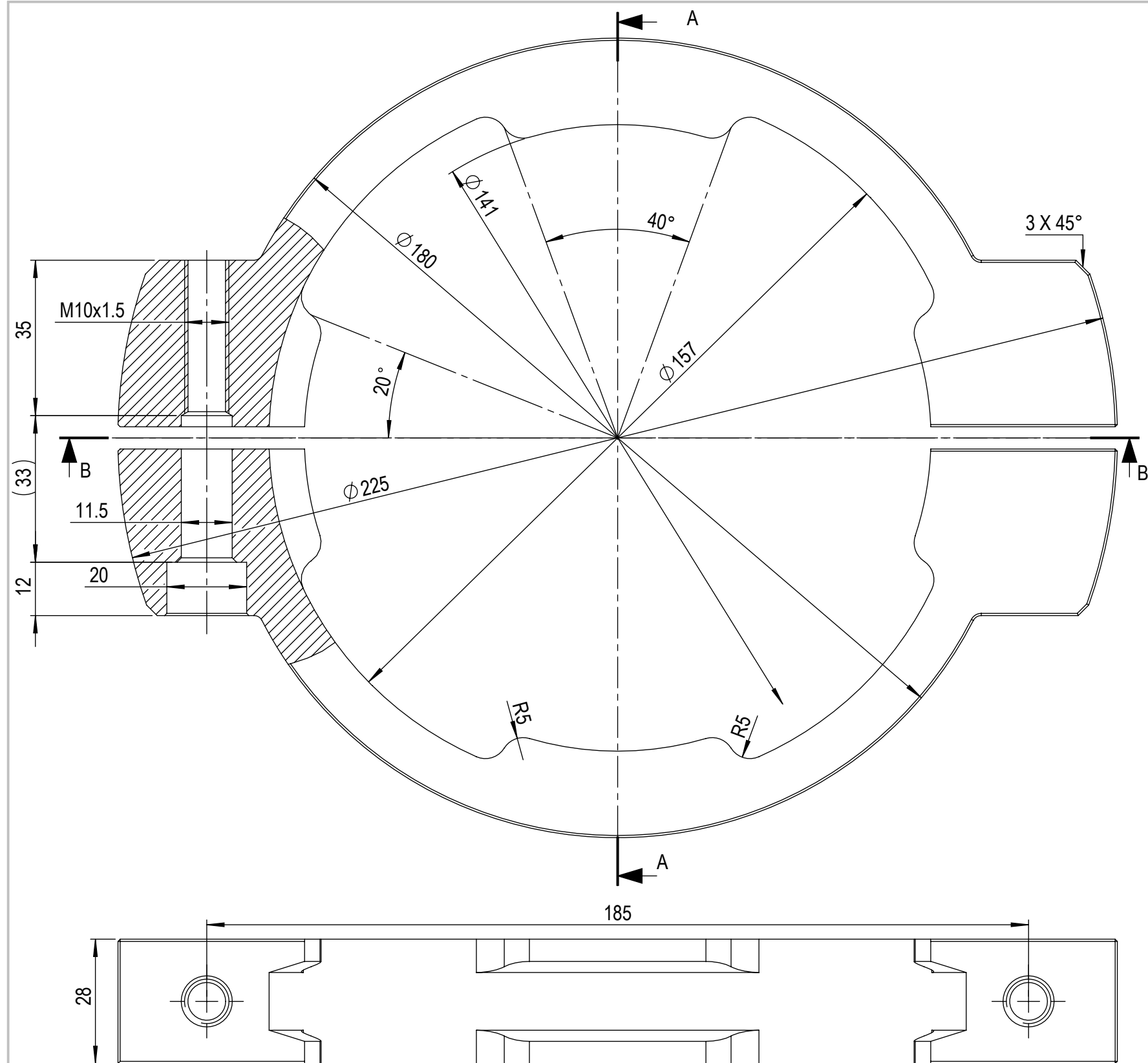


SECTION C-C
SCALE 1 : 3

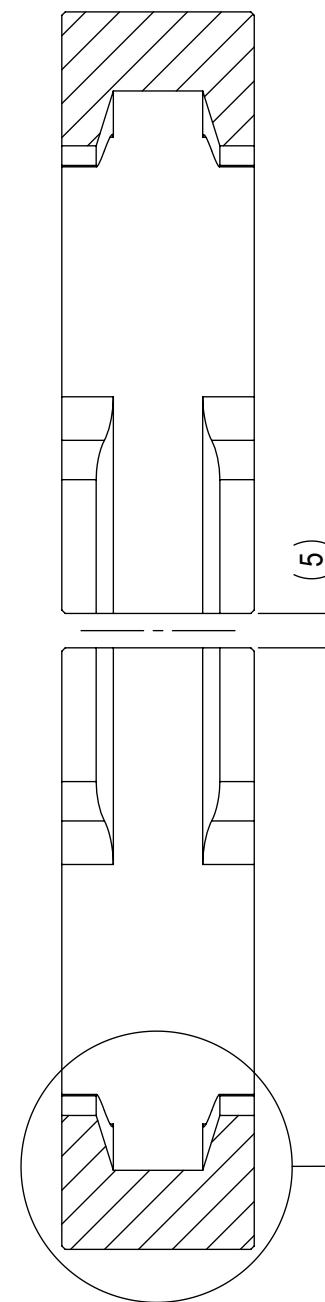
N8 / Ra 0,8

general angle 0,3...0,5

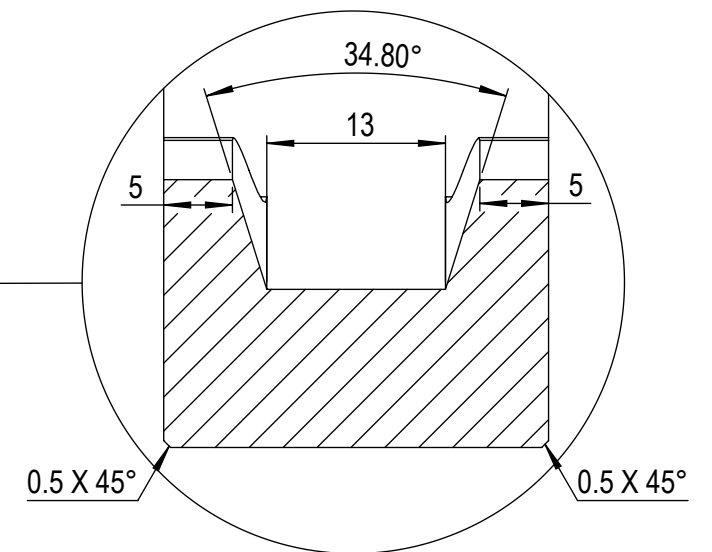
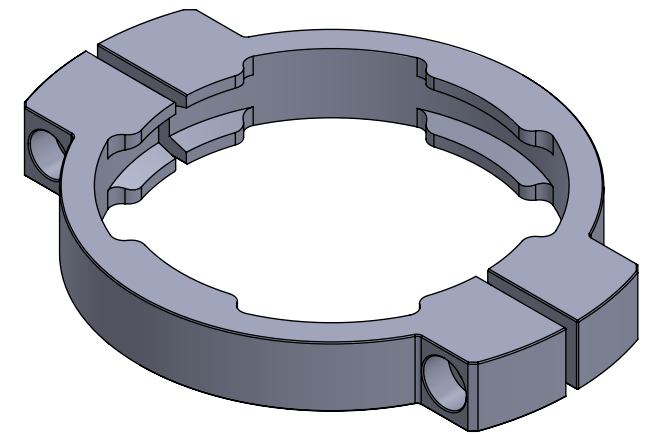
PROJECT DIRECTOR		DATE		17.08.20182		DEBUR AND BREAK SHARP EDGES		DO NOT SCALE DRAWING		REVISION	
M.Prokic		DATE MODIFY						<div>MPI-ULTRASONICS</div> <div>MARAIS 36</div> <div>2400 Le Locle</div> <div>Switzerland</div> <div>e-mail : mpi@mpi-ultrasonics.com</div> <div>phone</div> <div>+41 (0) 32 9314045</div>			
drew	H. Puga										
MATERIAL:											
General tolerance SN 258440											
dimension nominale (mm)		>3 ...6	>6 ...30	>30 ...120	>120 ...400	>400 ...1000	>1000 ...2000	Liposomes-Reactor			
Ecarts (mm)		± 0.05	± 0.1	± 0.15	± 0.2	± 0.3	± 0.5	SCALE: 1:1		SHEET 1 OF 1	
										A3	



SECTION B-B
SCALE 1 : 1.1



SECTION A-A
SCALE 1 : 1.1



N8 Ra 0,8

general angle 0,3...0,5

PROJECT DIRECTOR		DATE		17.08.20182		DEBUR AND BREAK SHARP EDGES		DO NOT SCALE DRAWING		REVISION	
M.Prokic		DATE MODIFY						MPI-ULTRASONICS MARAIS 36 2400 Le Locle Switzerland e-mail : mpi@mpi-ultrasonics.com phone +41 (0) 32 9314045			
drew H. Puga											
MATERIAL:				Al 7075							
General tolerance SN 258440											
dimension nominale (mm)		>3 ...6	>6 ...30	>30 ...120	>120 ...400	>400 ...1000	>1000 ...2000	Clamp-Squeeze			
Ecarts (mm)		± 0.05	± 0.1	± 0.15	± 0.2	± 0.3	± 0.5	SCALE: 1:1		SHEET 1 OF 1	
										A3	